



AREA POPULATION GROWTH

	1980	1990	2000	% Change 1990-00
Asheville	54,022	61,607	68,889	11.8%
Buncombe County	160,897	174,821	206,330	18.3%
Madison County	16,827	16,953	19,635	15.8%
Asheville MSA* Total	231,746	191,774	225,965	17.8%
Henderson County	58,580	69,285	89,173	27.9%
Asheville Area	236,304	261,059	315,138	20.1%
North Carolina	5,881,776	6,628,637	8,049,313	21.4%
United States	226,545,805	248,709,873	281,421,906	13.1%

Source: US Census Bureau

POPULATION BY AGE

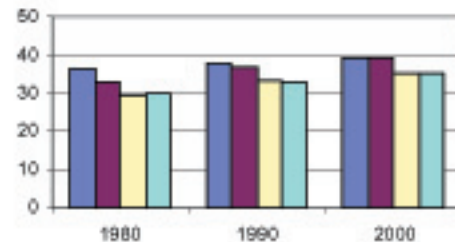
	2000 Total Population	18+	% of Total 18 and over	65+	% of Total 65 and over
Asheville City	68,889	55,397	80.4%	12,597	18.3%
Buncombe	206,330	161,201	78.1%	31,776	15.4%
Madison	19,635	15,463	78.8%	3,129	15.9%
Asheville MSA*	225,965	176,664	78.2%	34,905	15.4%
Henderson	89,173	70,621	79.2%	19,341	21.7%

Source: US Census Bureau

MEDIAN AGE

	1980	1990	2000
Asheville	36.3	37.8	39.2
Buncombe County	33.1	36.8	38.9
North Carolina	29.6	33.2	35.3
United States	30.0	32.8	35.3

Median Age 1980-2000



Source: NC Office of State Planning, US Census

* MSA: Metropolitan Statistical Area = Buncombe & Madison Counties